

# INSTALLATION GUIDE

DUB-9240

VERSION 2.1



**D-Link®**

**WIRELESS**

---

# Package Contents

Your DUB-9240 should contain all the items listed below. Before you begin the installation of the device, please check to make sure that the following items are included in your package.

- D-Link DUB-2240 Wireless USB 4-Port Hub
- D-Link DUB-1210 USB Adapter
- USB Cable
- Power Adapter (5V/3A)
- Firmware, Drivers, and Utilities CD
- Quick Installation Guide
- USB Extension Cable

**Note: Using a power supply with a different voltage than the one included with the DUB-2240 will cause damage and void the warranty for this product.**

*If any of the above items are missing, please contact your reseller.*

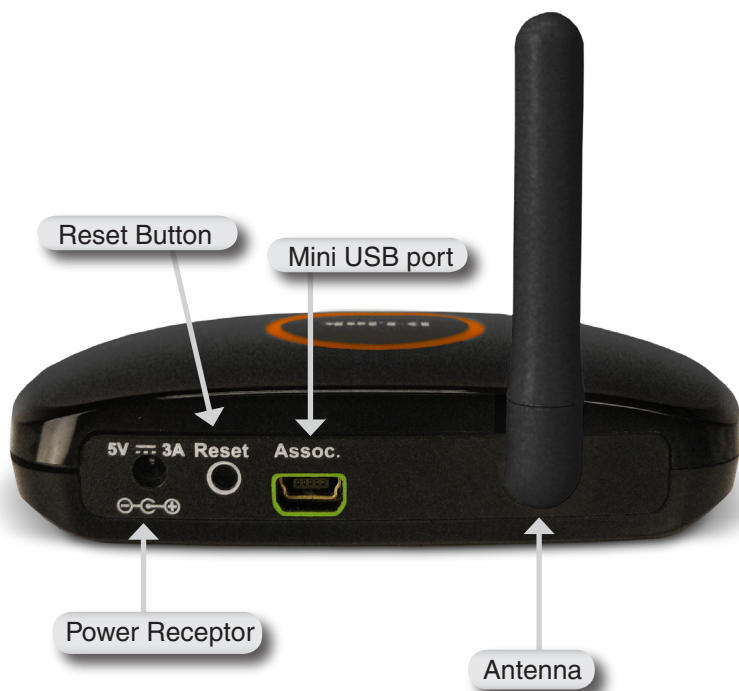
## System Requirements

- Windows® Vista™ or XP (Service Pack 2)
- 20MB Hard Drive Space
- An available USB 1.1 port

---

# Hardware Overview

The 4-port USB hub hardware features:



---

# Installation

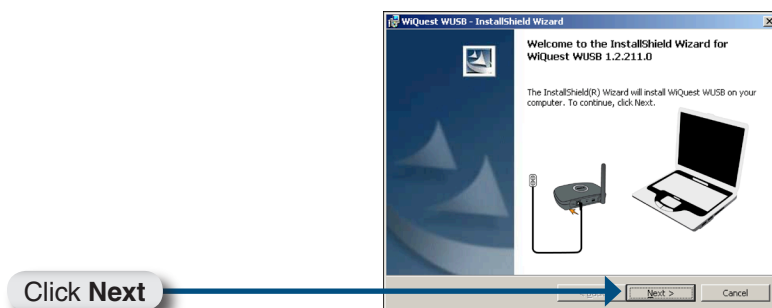
Before connecting your DUB-1210 USB Adapter or DUB-2240 Wireless USB 4-Port Hub, insert the provided CD into the CD drive on your PC. The InstallShield Wizard will start automatically and detect what operating system you are running on the PC.

**Note:** For long PIN association, the PIN is located on the label on the bottom of the USB hub. Follow manufacturer's instructions for installation.



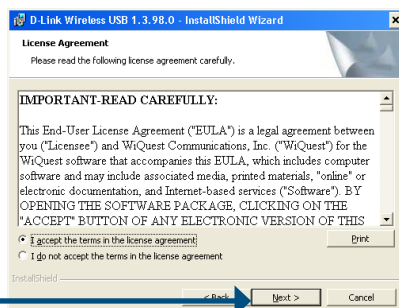
After the InstallShield Wizard detects what operating system is running on your PC, the Welcome screen will appear.

As instructed, do not plug the USB adapter or hub into the PC at this time. Only connect the power adapter to the hub



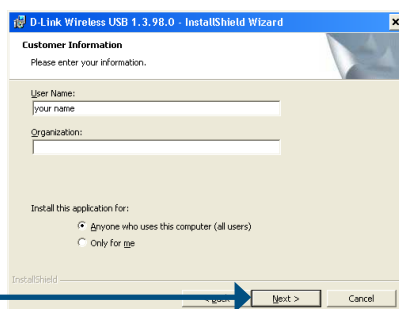
To accept the terms of the License Agreement, select “**I accept the terms in the license agreement**” as shown.

Click **Next**



Select the user you are installing the software application for. Choose “**Anyone who uses this computer**” to allow all users.

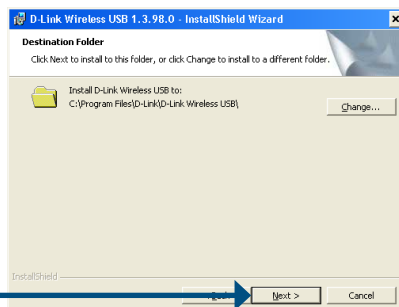
Click **Next**



Select a destination folder where the software will be installed.

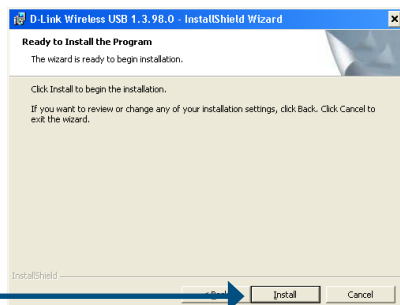
By default the software will install in the **C:\Program Files\D-Link\Wireless USB\** folder. Select **Change** to install in a different folder.

Click **Next** to continue



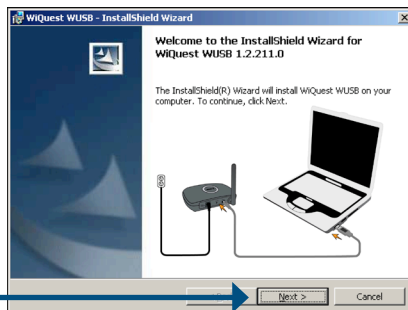
When the wizard is ready to install the software, you will be prompted to begin the installation. Click **Back** to make changes to the previous steps or **Cancel** to exit the wizard without installing the software.

Click **Install**

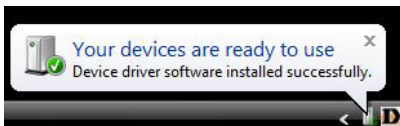


With the installation nearly complete, the wizard will instruct you to connect the USB hub to the computer to begin the association process and install the hub.

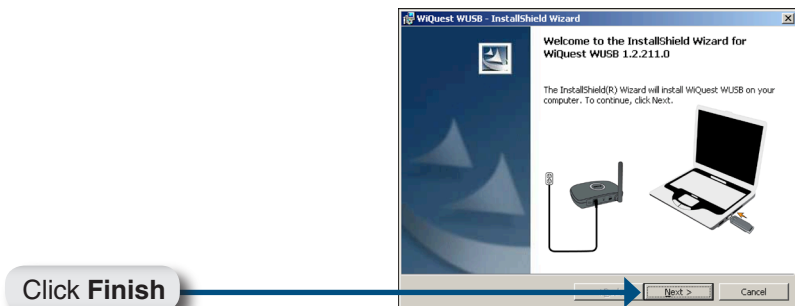
Click **Next**



The wizard will prompt you when the software has installed successfully and the devices are ready to use.



This completes the software setup.



After the software has been installed, plug the USB adapter into an available USB port on your computer to establish a wireless connection to the wireless hub.

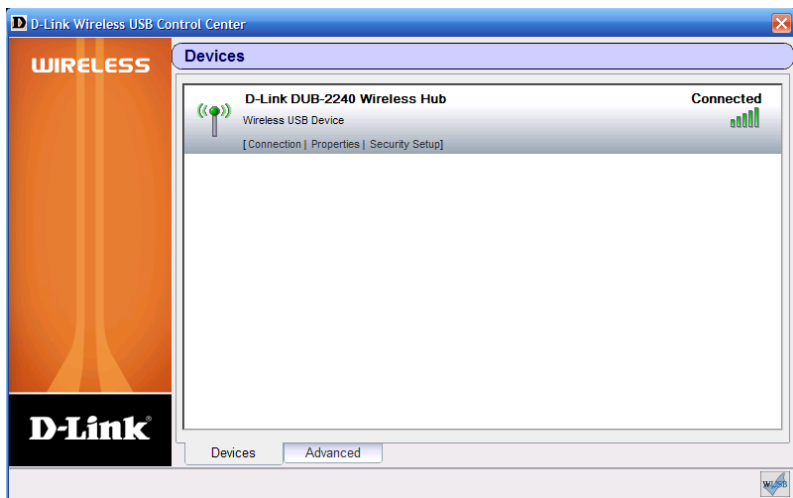
You may now plug your USB devices into the wireless hub.

**Note:** For the best reception and performance, position the adapter vertically using the provided USB extension cable.

---

# Using the Control Center Devices

The Devices screen displays the status of the connection between the wireless USB adapter and hub.



From the Devices screen, you can check the connection status of the wireless USB hub, the properties, and setup security for the wireless connection.

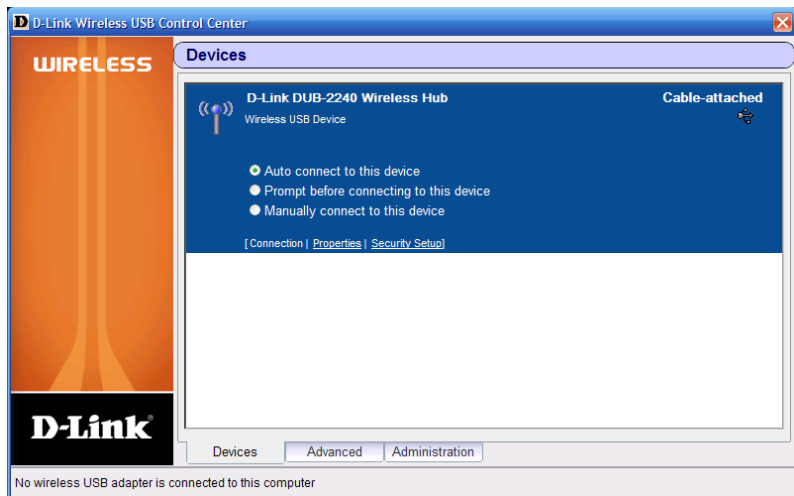




---

# Connection

The Connection Status option allows you to disconnect from the wireless USB hub. You may also select when the USB hub will connect to the USB adapter.



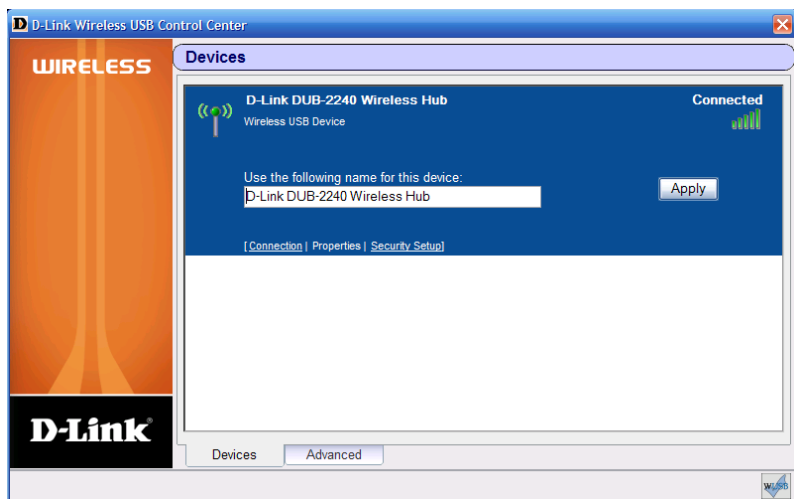
Select one of the following:

- **Auto connect to this device** - The USB adapter will connect to the hub upon startup. This is the default option.
- **Prompt before connecting to this device** - You will receive an alert asking if you would like to connect to the USB hub.
- **Manually connect to this device** - You must open the software and click **Connect** to connect to the USB hub.

---

## Properties

You can change the name of the wireless hub. This is helpful if you are attached to multiple hubs. In the box, type in a new name and click **Apply**.



---

# Security Setup

The Security Setup page allows you to enable security on the wireless connection between the hub and the user. Click **Remove** to disable the security.



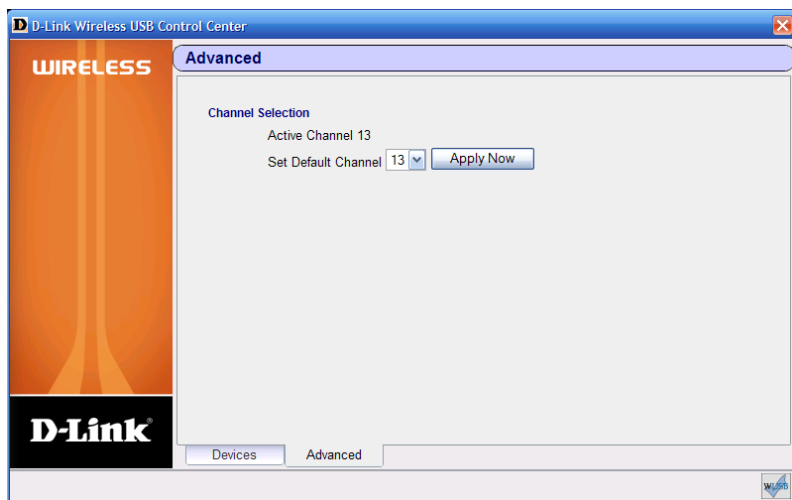
When attempting to connect to a hub that has security enabled, you will be prompted to enter a password.



---

# Advanced

The Advanced screen allows you to change the wireless channel that USB hub uses. Select a new channel and click **Apply Now**.



# Administration

The Administration screen has the option to set a new administrator password for the device. The user password can also be set here. This page also displays what computers the selected hub is currently associated with.

The screenshot shows the 'D-Link Wireless USB Control Center' window with the 'Device Administration' tab selected. On the left is a vertical orange bar with 'WIRELESS' at the top and the 'D-Link' logo at the bottom. The main content area has a light blue header 'Device Administration'. Below it, 'Select Cable-Connected Device:' is followed by a dropdown menu showing 'D-Link DUB-2240 Wireless Hub'. The 'Administrator Password:' section has two input fields: 'Enter New Administrator Password' and 'Confirm New Administrator Password', with 'Set' and 'Delete' buttons below. The 'User Password:' section has two input fields: 'Enter New User Password' and 'Confirm New User Password', with 'Set' and 'Delete' buttons below. A section titled 'This device is available to the following computers:' shows 'Number of Computers: 2'. Below are two entries: 'ADMIN-PC' and 'My PC', each with an unchecked checkbox. At the bottom of this section are 'Rename Selected' and 'Delete Selected' buttons. At the very bottom of the window are three tabs: 'Devices', 'Advanced', and 'Administration' (which is active). A status bar at the bottom says 'No wireless USB adapter is connected to this computer'.

When attempting to access the Administration screen you will be prompted to enter the administrator password:

The dialog box has a light blue header with the text 'Please enter the administrator password for the selected device'. To the right is a single-line text input field. Below the input field is an 'OK' button.

**Note:** The Administration tab is only available when the hub is wired to a computer via an USB cable.

---

# Notes

---

# Registration

**Register your product online at:  
<http://support.dlink.com/register>**



Product registration is entirely voluntary and failure to complete or return this form will not diminish your warranty rights.

---

# Technical Support

D-Link's website contains the latest user documentation and software updates for D-Link products.

U.S. and Canadian customers can contact D-Link Technical Support through our website or by phone.

For warranty information, please refer to the CD-ROM supplied with this product.

## United States

**Telephone**  
(877) 453-5465

**World Wide Web**  
<http://support.dlink.com>

## Canada

**Telephone**  
(800) 361-5265

**World Wide Web**  
<http://support.dlink.com>



Version 2.1  
November 15, 2007

Copyright ©2007 D-Link Corporation/D-Link Systems, Inc. All rights reserved. D-Link and the D-Link logo are registered trademarks of D-Link Corporation or its subsidiaries in the United States and other countries. Other trademarks are the property of their respective owners. Network conditions and environmental factors, including volume of network traffic, building materials and construction, and network overhead, lower actual data throughput rate. Environmental factors will adversely affect wireless signal range. Product specifications, size and shape are subject to change without notice, and actual product appearance may differ from that depicted on the packaging. Visit [www.dlink.com](http://www.dlink.com) for more details.